

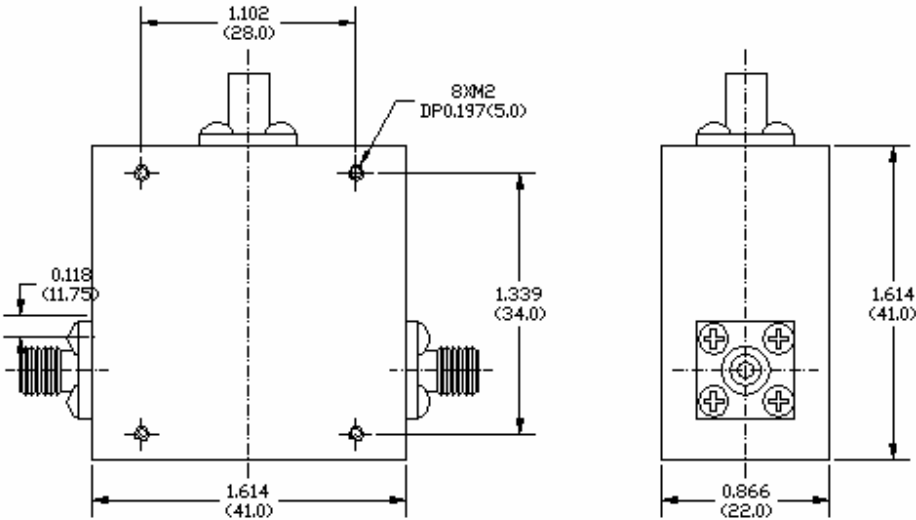
Key Features:

- Center frequency range: 1.7~2.7 GHz, wide bandwidth
- Small size, SMA connectorized in/out
- Power handling +10 Watts forward, +5 Watts reverse
- Operating temperature -20~+65°C
- Customer specify center frequency and bandwidth

Electrical Specifications

Part No.	Freq Range GHz	Ins. Loss, dB	Reverse Iso., dB	VSWR Max	Forward Power, Watts	Reverse Power Watts	Temp. Range, °C
F2083-0190-32	1.60~2.20	0.5 max	20 min	1.25:1	≥ 10	≥ 5	0 ~ +50
F2083-0200-50	1.50~2.50	0.5 max	18 min	1.35:1	≥ 10	≥ 5	-20 ~ +65
F2083-0220-45	1.70~2.70	0.5 max	18 min	1.35:1	≥ 10	≥ 5	-20 ~ +65

Mechanical Structure:



Note: All units in inches (mm)

Ordering Information:

