

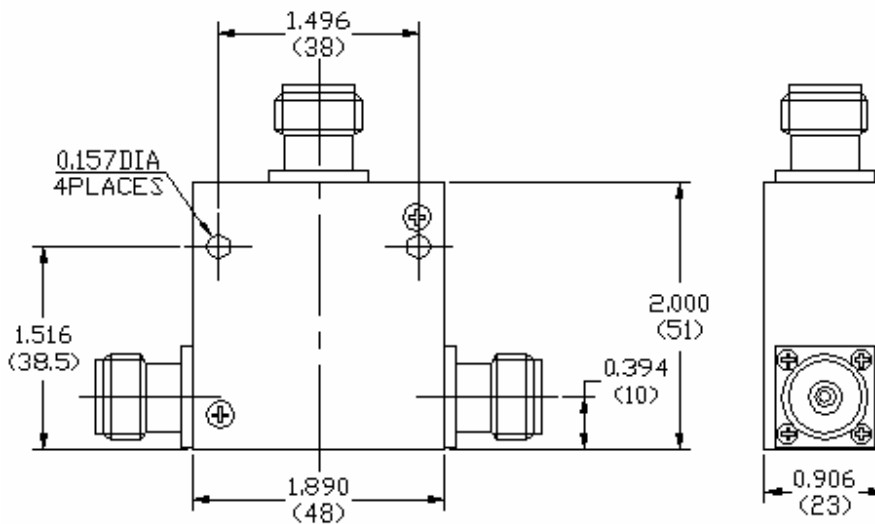
**Key Features:**

- Frequency range: 800~1800MHz
- SMA or N type connectors, customer to specify
- Power handling >+100Watts
- Operating temperature -30~+60°C

**Electrical Specifications**

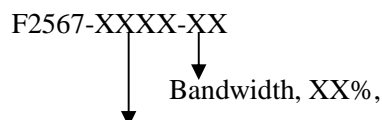
Part No.	Freq Range MHz	Insertion Loss, dB	Reverse Isolation, dB	VSWR	Forward Power, Watts	Temp. Range, °C
F2567-0089-15	820-960	0.5 Max	≥20	≤1.2	≥100	-30 ~ +60
F2567-0106-06	1030~1090	0.5 Max	≥20	≤1.2	≥100	-30 ~ +60
F2567-0130-15	1200-1400	0.5 Max	≥20	≤1.2	≥100	-30 ~ +60

**Mechanical Structure:**



Note: All units in inches (mm).

**Ordering Information:**



Frequency XX.XX GHz,