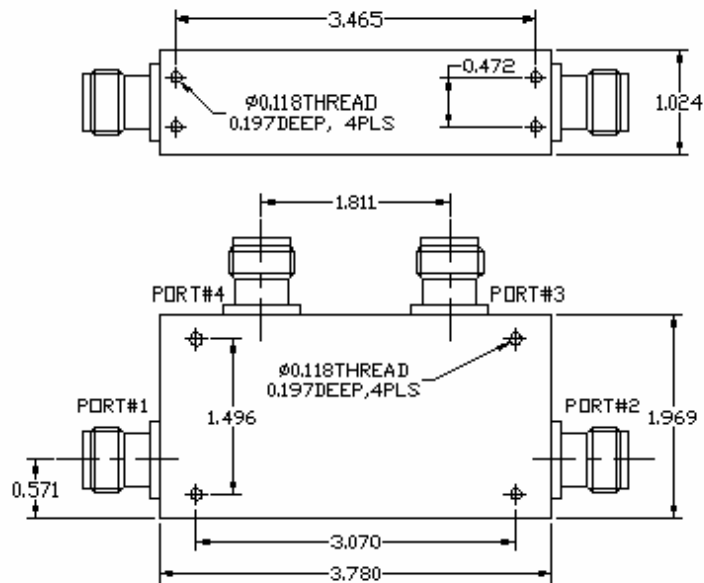


**Key Features:**

- Center frequency range: 400~800MHz
- Dual junction for high isolation
- SMA or N type connectors, customer to specify
- Power handling >+50Watts
- Operating temperature -30~+60°C

**Electrical Specifications**

Part No.	Freq Range MHz	Insertion Loss, dB 1-2, 3-4	Insertion Loss, dB 2-3, 4-1	Reverse Isolation, dB, 2-1, 4-3	Reverse Isolation, dB, 3-2, 1-4	VSWR	Forward Power, Watts	Temp. Range, °C
F2942-0048-19	430-520	1.0 Max	0.5 Max	≥40	≥20	≤1.2	≥50	-30 ~ +60

**Mechanical Structure:****Ordering Information:**

Note: All units in inches

F2942-XXXX-XX

Bandwidth, XX%,

Frequency XX.XX GHz,