

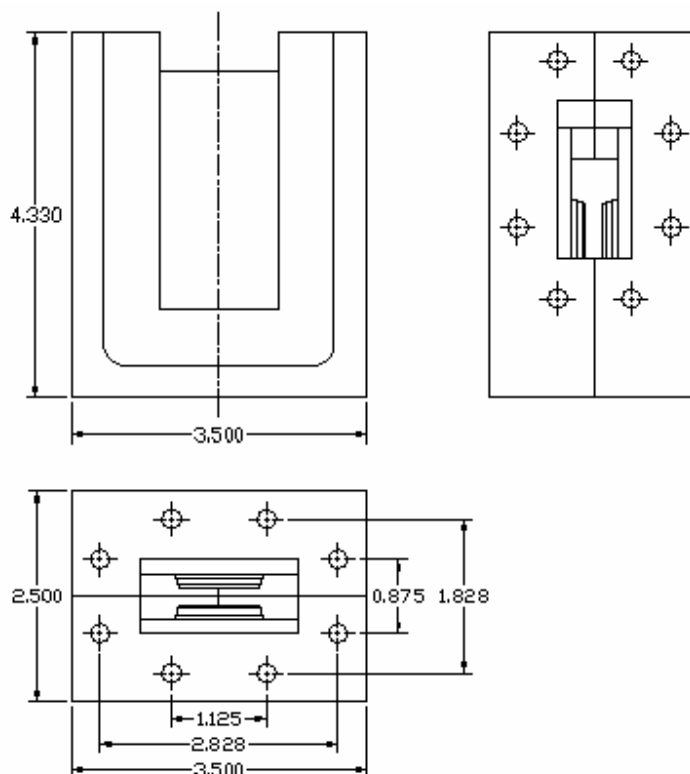
Key Features:

- Frequency range: 3.9~5.85GHz, bandwidth 500MHz
- WR-187 waveguide, CPR187 flange
- Power handling >20Watts CW
- Customer specify center frequency and bandwidth

Electrical Specifications

| Part No. | Freq Range MHz | Insertion Loss, dB | Reverse Isolation, dB | VSWR | CW Power, Watts | Temp. Range, °C |
|---------------|----------------|--------------------|-----------------------|------|-----------------|-----------------|
| F3580-0475-11 | 4.5~5.0 | 0.4 Max | ≥ 20 | ≤1.2 | ≥ 20 | -40 ~ +55 |
| F3580-0495-10 | 4.7~5.2 | 0.4 Max | ≥ 20 | ≤1.2 | ≥ 20 | -40 ~ +55 |

Mechanical Structure:



All units in inches

Ordering Information:

