

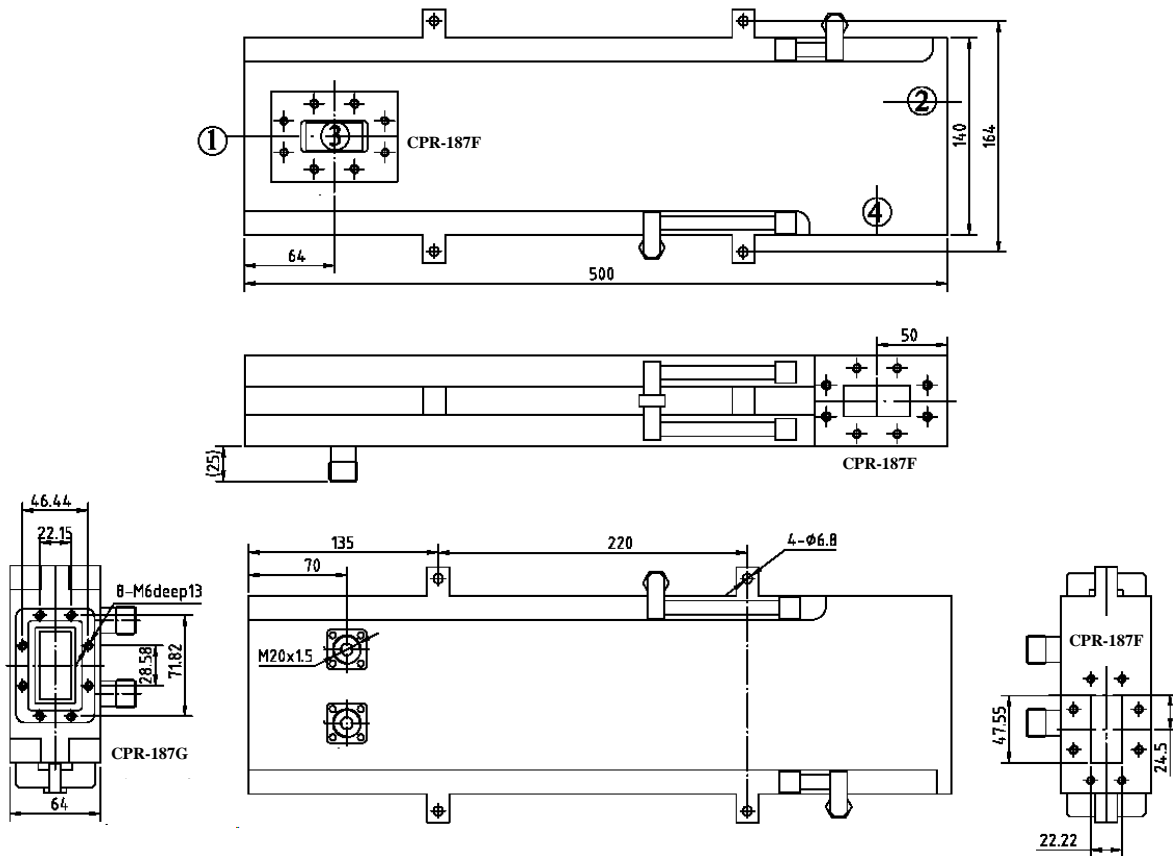
Key Features:

- Frequency range: 5.45~5.85GHz
- WR-187 waveguide
- Power handling >8kWatts CW, 1000kW pulse
- Weight: ~9 kg
- Cooling method, water

Electrical Specifications

Part No.	Freq Range GHz	Insertion Loss, dB	Reverse Isolation, dB	VSW R	CW Power, Watts	Pulse Power, kWatts	Temp. Range, °C
F3856-0565-11	5.45~5.85	0.5Max	≥ 20	≤1.2	≥ 8000	≥ 1000	-30 ~ +60

Mechanical Structure:



All units in millimeters