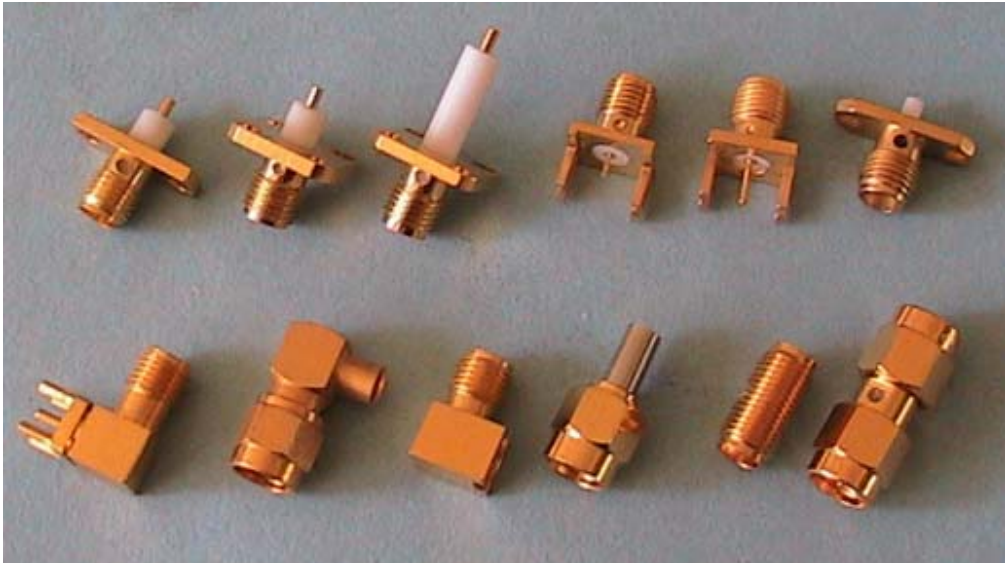


SMA Connectors

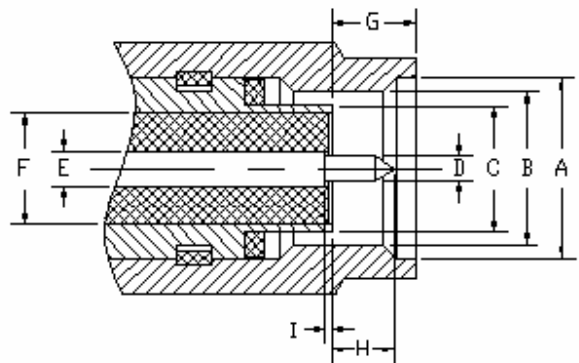
Our SMA (Sub-Miniature Type A) connectors are manufactured per MIL-C-39012, IEC169-15 and feature excellent RF performance, high reliability, long life and low costs. SMA connectors are widely used in defense and telecommunication industries.



Mating Engagement Interfaces

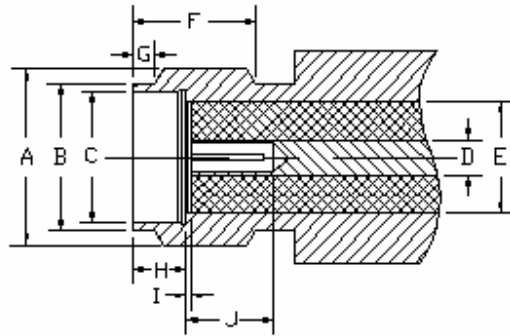
Male (Plug)

	Minimum inch (mm)	Maximum inch (mm)
A	0.25(6.35)	0.265(6.73)
B	1/4 10 36 UNS 2B	
C	0.178(4.53)	0.181(4.59)
D	0.035(0.90)	0.037(0.94)
E	0.049(1.24)	0.051(1.30)
F	0.160(4.08)	0.162(4.12)
G	0.100(2.54)	0.135(3.43)
H	0.075(1.91)	0.100(2.54)
I	0.00	0.010(0.25)



Female (Jack)

	Minimum inch (mm)	Maximum inch (mm)
A	1/4 10 36 UNS 2A	
B	0.208(5.28)	0.216(5.49)
C	0.181(4.60)	0.185(4.70)
D	0.049(1.24)	0.051(1.30)
E	0.160(4.08)	0.162(4.12)
F	0.170(4.31)	
G	0.015(0.38)	0.045(1.14)
H	0.074(1.88)	0.078(1.98)
I	0.00	0.010(0.25)
J	0.115(2.92)	



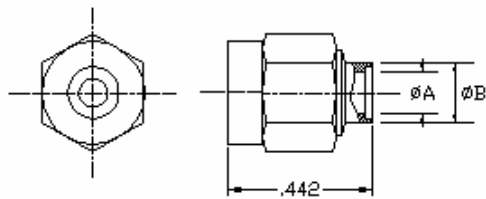
Electrical Specifications:

Characteristic impedance:	50 Ω
Frequency range:	
Semi-rigid cable:	0~18 GHz
Flexible cable:	0~12.4GHz
VSWR:	
Semi-rigid cable:	1.10+0.01f(GHz)
Flexible cable:	1.20+0.025f(GHz)
Insertion loss:	0.03f(GHz) dB max
RF leakage:	-60 dB max
Voltage:	700V RMS
Insulation:	>5000 M Ω
Contact resistance:	
Inner conductor:	<5 m Ω
Outer conductor:	<5 m Ω

Mechanical and environment specifications:

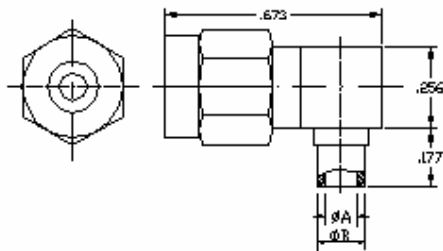
Temperature range:	-65°C~+155°C
Connection strength:	>100 lbs
Mating torque:	5 n-lbs
Vibration:	10g
Shock:	100g
Life:	500 times

1. Semi-Rigid Cable Connectors



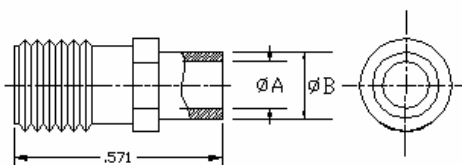
Straight Cable Male

Part Number	Cable Type	A(inch)	B(inch)
SMA1006-1	085	0.087	0.157
SMA1006-2	141	0.143	0.197



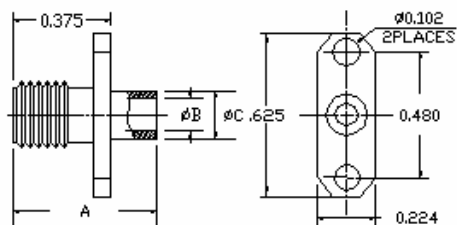
Right Angle Cable Male

Part Number	Cable Type	A(inch)	B(inch)
SMA1016-1	085	0.087	0.157
SMA1016-2	141	0.143	0.197



Straight Cable Female

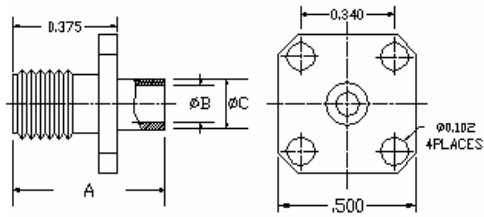
Part Number	Cable Type	A(inch)	B(inch)
SMA1026-1	085	0.087	0.157
SMA1026-2	141	0.143	0.197



Two-Hole Flange Mount Cable Female

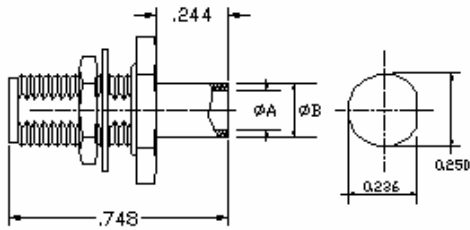
Part Number	Cable Type	A(inch)	B(inch)	C(inch)
SMA1030-1	085	0.500	0.087	0.157
SMA1030-2	141	0.560	0.143	0.197

Four-Hole Flange Mount Cable Female



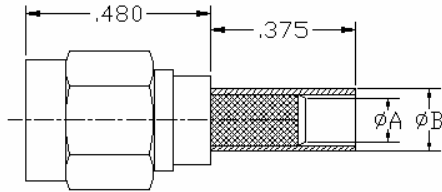
Part Number	Cable Type	A(inch)	B(inch)	C(inch)
SMA1031-1	085	0.500	0.087	0.157
SMA1031-2	141	0.560	0.143	0.197

Bulkhead Straight Cable Female



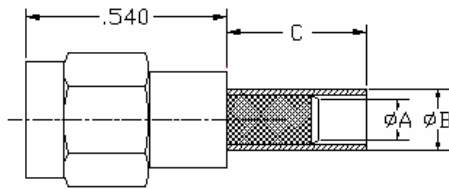
Part Number	Cable Type	A(inch)	B(inch)
SMA1036-1	085	0.087	0.157
SMA1036-2	141	0.143	0.197

2. Flexible Cable Connectors



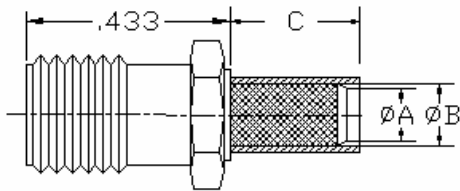
Straight Cable Male

Part Number	Cable Type	A(inch)	B(inch)
SMA1111-1	RG-174/U, 188A/U, 316/U	0.063	0.110
SMA1111-2	RG316DT	0.063	0.134



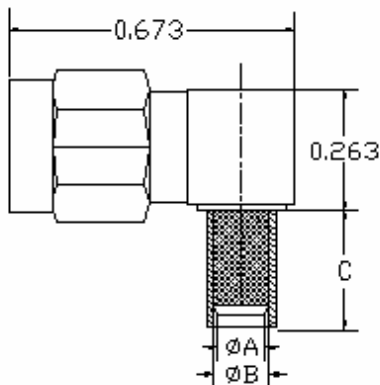
Straight Cable Male

Part Number	Cable Type	A(inch)	B(inch)	C(inch)
SMA1112-1	RG-303/U	0.091	0.165	0.394
SMA1112-2	RG-58/U, 141A/U	0.122	0.205	0.472
SMA1112-3	RG-55/U, 142B/U, 223/U, 400/U	0.122	0.224	0.590



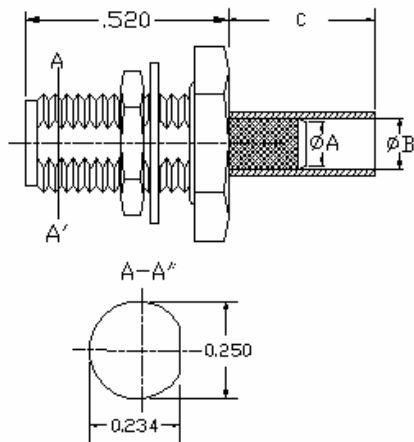
Straight Cable Female

Part Number	Cable Type	A(inch)	B(inch)	C(inch)
SMA1116-1	RG-174/U, 188A/U, 316/U	0.063	0.110	0.375
SMA1116-2	RG316DT	0.063	0.134	0.375
SMA1116-3	RG303/U	0.091	0.165	0.394
SMA1116-4	RG-58/U, 141A/U	0.122	0.205	0.472
SMA1116-5	RG-55/U, 142B/U, 223/U, 400/U	0.122	0.224	0.590



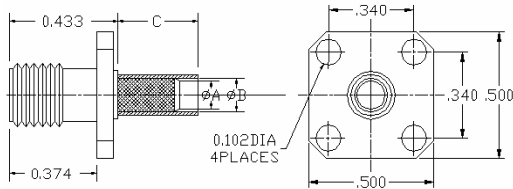
Right Angle Cable Male

Part Number	Cable Type	A(inch)	B(inch)	C(inch)
SMA1118-1	RG-174/U, 188A/U, 316/U	0.063	0.110	0.375
SMA1118-2	RG316DT	0.063	0.134	0.375
SMA1118-3	RG303/U	0.091	0.165	0.394
SMA1118-4	RG-58/U, 141A/U	0.122	0.205	0.472
SMA1118-5	RG-55/U, 142B/U, 223/U, 400/U	0.122	0.224	0.590



Bulkhead Straight Cable Female

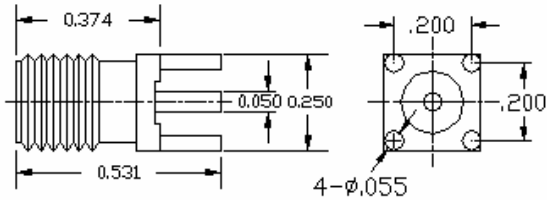
Part Number	Cable Type	A(inch)	B(inch)	C(inch)
SMA1126-1	RG-174/U, 188A/U, 316/U	0.063	0.110	0.375
SMA1126-2	RG316DT	0.063	0.134	0.375
SMA1126-3	RG303/U	0.091	0.165	0.394
SMA1126-4	RG-58/U, 141A/U	0.122	0.205	0.472
SMA1126-5	RG-55/U, 142B/U,223/U, 400/U	0.122	0.224	0.590



Flange Mount Straight Cable female

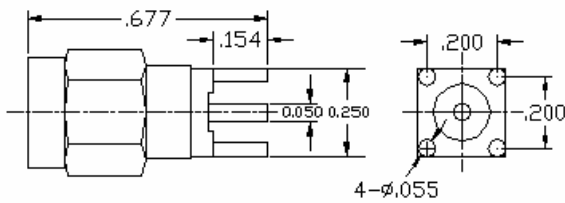
Part Number	Cable Type	A(inch)	B(inch)	C(inch)
SMA1132-1	RG-174/U, 188A/U, 316/U	0.063	0.110	0.375
SMA1132-2	RG316DT	0.063	0.134	0.375
SMA1132-3	RG303/U	0.091	0.165	0.394
SMA1132-4	RG-58/U, 141A/U	0.122	0.205	0.472
SMA1132-5	RG-55/U, 142B/U,223/U, 400/U	0.122	0.224	0.590

3. Printed Circuit Board and Surface Mount Connectors



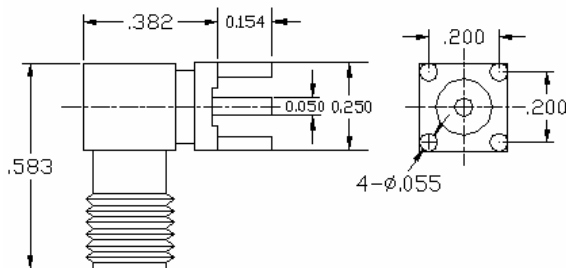
Straight Female PCB Mount Connector

Part Number
SMA1211



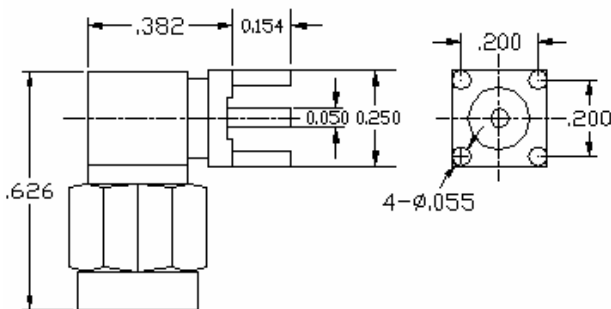
Straight Male PCB Mount Connector

Part Number
SMA1212



Right Angle Female PCB Mount Connector

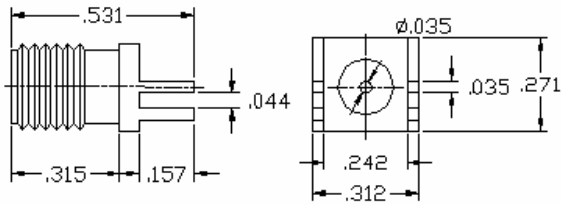
Part Number
SMA1217



Right Angle Male PCB Mount Connector

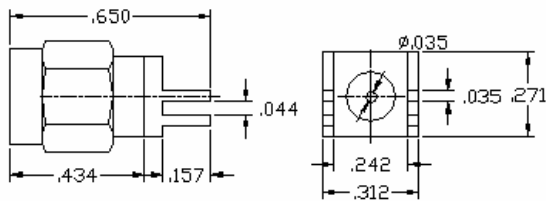
Part Number
SMA1218

Straight Female PCB Mount Connector



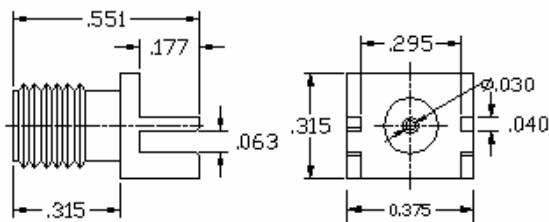
Part Number
SMA1223

Straight Male PCB Mount Connector



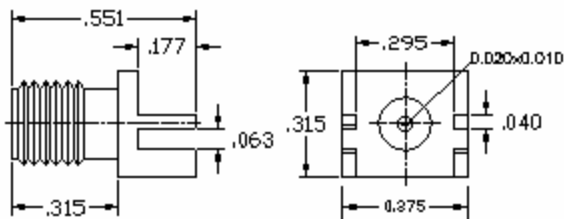
Part Number
SMA1224

Straight Female PCB Mount Connector



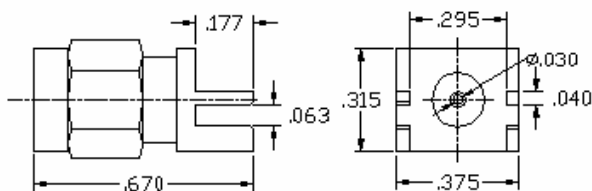
Part Number
SMA1227

Straight Female PCB Mount – Flat Tap



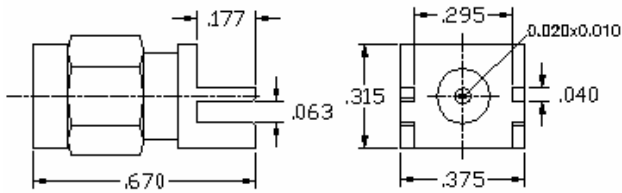
Part Number
SMA1228

Straight Male PCB Mount Connector



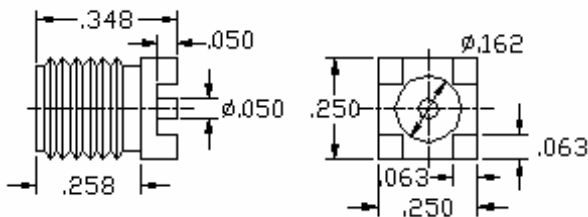
Part Number
SMA1229

Straight Male PCB Mount – Flat Tap



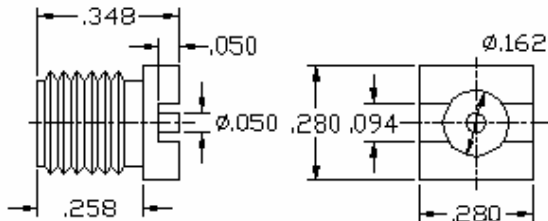
Part Number
SMA1230

Straight Female SMT Mount



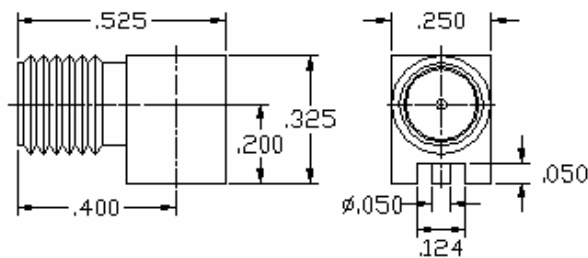
Part Number
SMA1235

Straight Female SMT Mount



Part Number
SMA1236

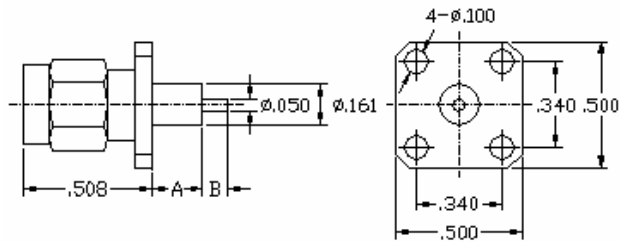
Right Angle Female SMT Mount



Part Number
SMA1238

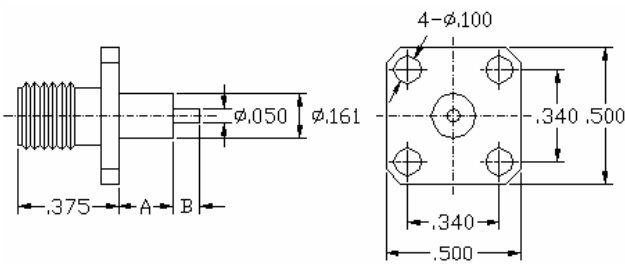
4. Flange Mount Connectors

Male Straight 4-Hole



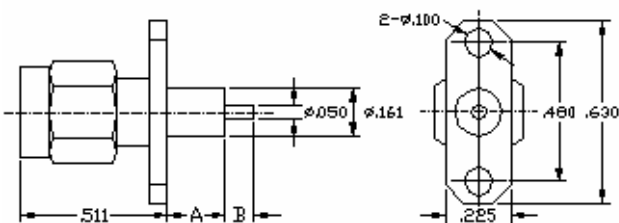
Part Number	A(inch)	B(inch)
SMA1311-00-10	0.000	0.100
SMA1311-10-10	0.100	0.100
SMA1311-16-10	0.157	0.100
SMA1311-24-10	0.236	0.100
SMA1311-47-10	0.472	0.100

Female Straight 4-Hole



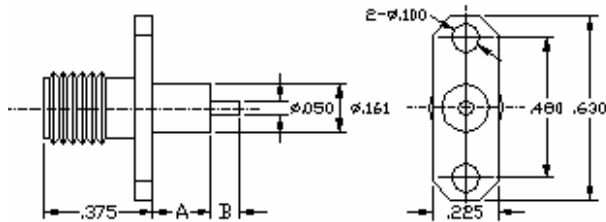
Part Number	A(inch)	B(inch)
SMA1312-00-10	0.000	0.100
SMA1312-10-10	0.100	0.100
SMA1312-16-10	0.157	0.100
SMA1312-24-10	0.236	0.100
SMA1312-47-10	0.472	0.100

Male Straight 2-Hole



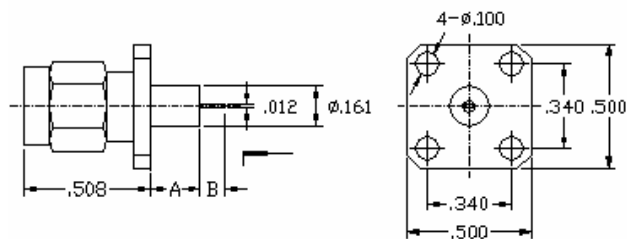
Part Number	A(inch)	B(inch)
SMA1317-00-10	0.000	0.100
SMA1317-10-10	0.100	0.100
SMA1317-16-10	0.157	0.100
SMA1317-24-10	0.236	0.100
SMA1317-47-10	0.472	0.100

Female Straight 2-Hole



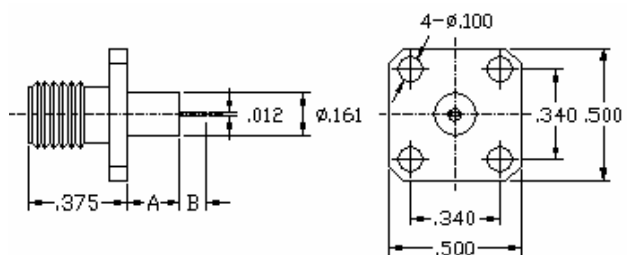
Part Number	A(inch)	B(inch)
SMA1318-00-10	0.000	0.100
SMA1318-10-10	0.100	0.100
SMA1318-16-10	0.157	0.100
SMA1318-24-10	0.236	0.100
SMA1318-47-10	0.472	0.100

Male Straight 4-Hole-Flat Tap



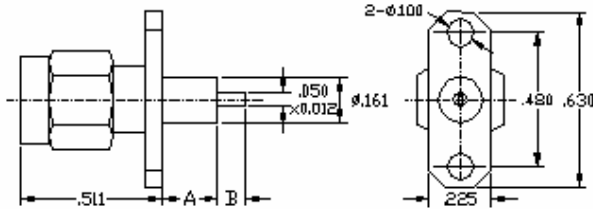
Part Number	A(inch)	B(inch)
SMA1321-00-10	0.000	0.100
SMA1321-10-10	0.100	0.100
SMA1321-16-10	0.157	0.100
SMA1321-24-10	0.236	0.100
SMA1321-47-10	0.472	0.100

Female Straight 4-Hole-Flat Tap



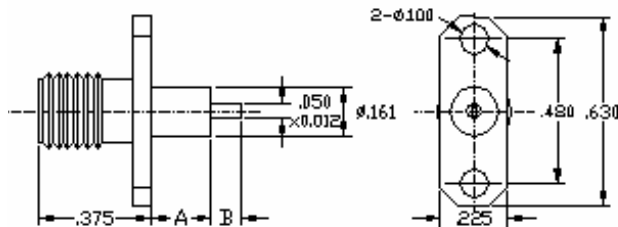
Part Number	A(inch)	B(inch)
SMA1322-00-10	0.000	0.100
SMA1322-10-10	0.100	0.100
SMA1322-16-10	0.157	0.100
SMA1322-24-10	0.236	0.100
SMA1322-47-10	0.472	0.100

Male Straight 2-Hole-Flat Tap



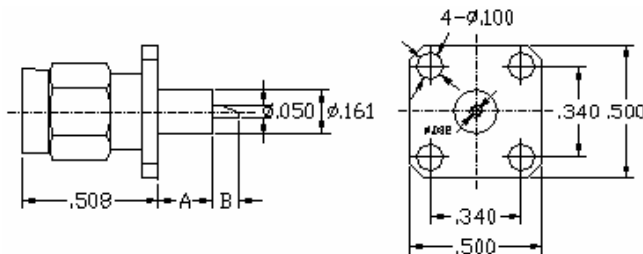
Part Number	A(inch)	B(inch)
SMA1327-00-10	0.000	0.100
SMA1327-10-10	0.100	0.100
SMA1327-16-10	0.157	0.100
SMA1327-24-10	0.236	0.100
SMA1327-47-10	0.472	0.100

Female Straight 2-Hole-Flat Tap



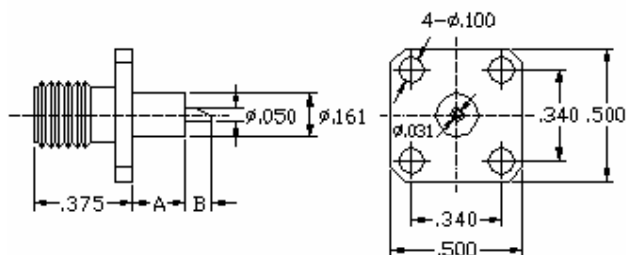
Part Number	A(inch)	B(inch)
SMA1328-00-10	0.000	0.100
SMA1328-10-10	0.100	0.100
SMA1328-16-10	0.157	0.100
SMA1328-24-10	0.236	0.100
SMA1328-47-10	0.472	0.100

Male Straight 4-Hole-Solder

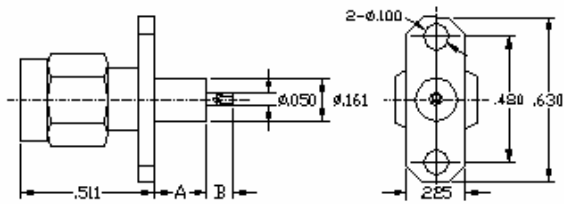


Part Number	A(inch)	B(inch)
SMA1331-00-12	0.000	0.118
SMA1331-10-12	0.100	0.118
SMA1331-16-12	0.157	0.118
SMA1331-24-12	0.236	0.118
SMA1331-47-12	0.472	0.118

Female Straight 4-Hole-Solder

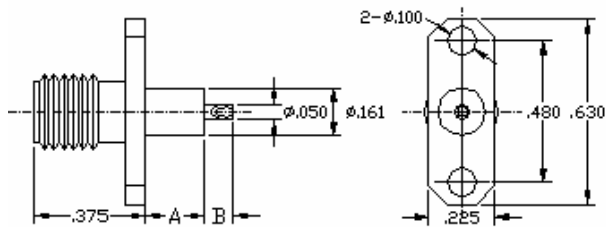


Part Number	A(inch)	B(inch)
SMA1332-00-12	0.000	0.118
SMA1332-10-12	0.100	0.118
SMA1332-16-12	0.157	0.118
SMA1332-24-12	0.236	0.118
SMA1332-47-12	0.472	0.118



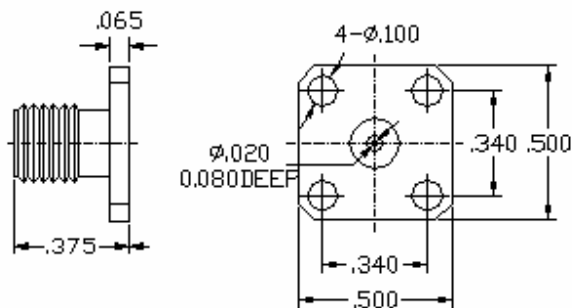
Male Straight 2-Hole-Solder

Part Number	A(inch)	B(inch)
SMA1337-00-12	0.000	0.118
SMA1337-10-12	0.100	0.118
SMA1337-16-12	0.157	0.118
SMA1337-24-12	0.236	0.118
SMA1337-47-12	0.472	0.118



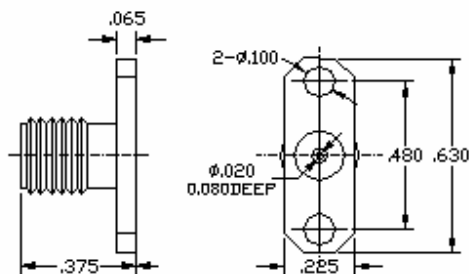
Female Straight 2-Hole-Solder

Part Number	A(inch)	B(inch)
SMA1338-00-12	0.000	0.118
SMA1338-10-12	0.100	0.118
SMA1338-16-12	0.157	0.118
SMA1338-24-12	0.236	0.118
SMA1338-47-12	0.472	0.118



**Female Straight 4-Hole Flange Socket
(accept 20 mil pins)**

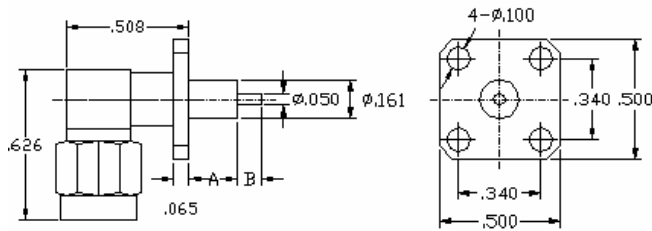
Part Number
SMA1352



**Female Straight 2-Hole Flange Socket
(accept 20 mil pins)**

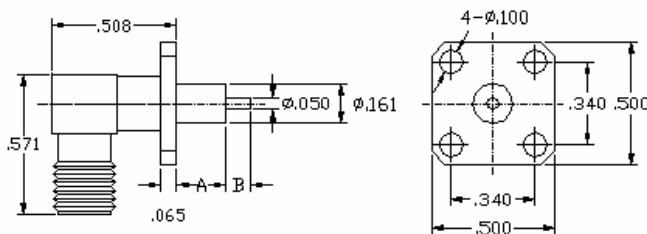
Part Number
SMA1358

Male Right Angle 4-Hole Flange



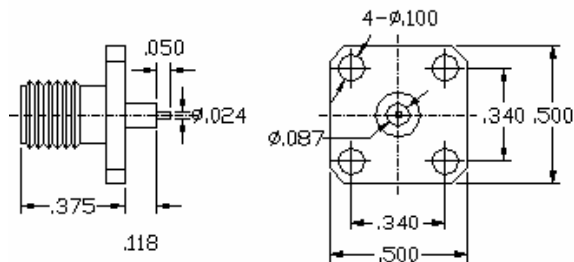
Part Number	A(inch)	B(inch)
SMA1361-00-12	0.000	0.100
SMA1361-10-12	0.100	0.100
SMA1361-16-12	0.157	0.100
SMA1361-24-12	0.236	0.100
SMA1361-47-12	0.472	0.100

Female Right Angle 4-Hole Flange



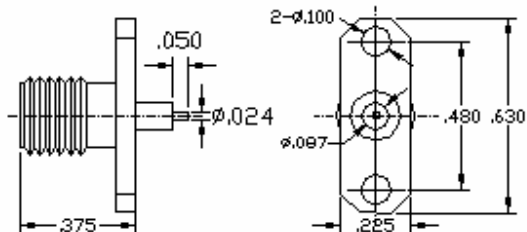
Part Number	A(inch)	B(inch)
SMA1362-00-12	0.000	0.100
SMA1362-10-12	0.100	0.100
SMA1362-16-12	0.157	0.100
SMA1362-24-12	0.236	0.100
SMA1362-47-12	0.472	0.100

Female Straight 4-Hole Flange

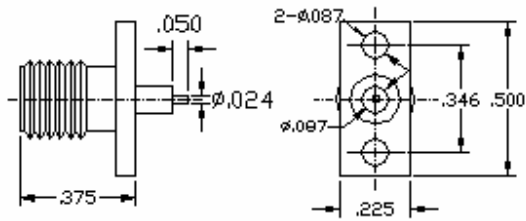


Part Number
SMA1372

Female Straight 2-Hole Flange(stainless steel)

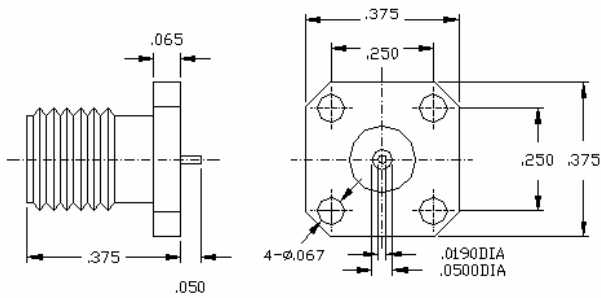


Part Number
SMA1378



Female Straight 2-Hole Flange

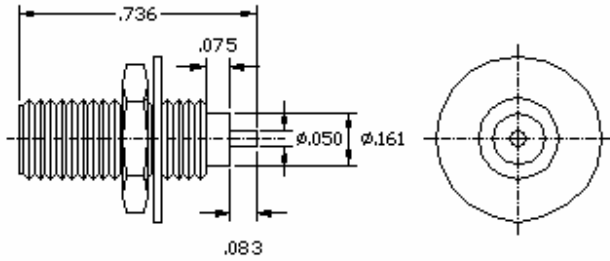
Part Number
SMA1379



Female Straight 4-Hole Flange

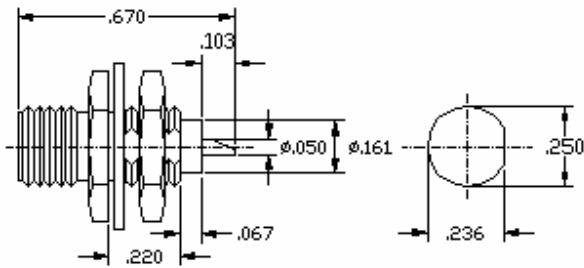
Part Number
SMA1382

5. Bulkhead Feedthrough Connectors



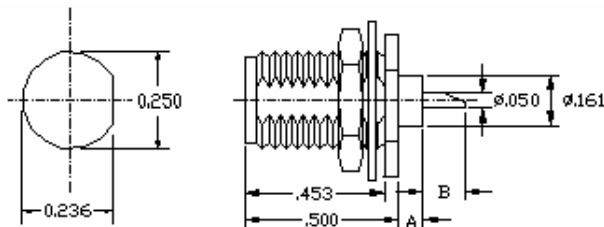
Bulkhead Feedthrough

Part Number
SMA1421



Bulkhead Feedthrough

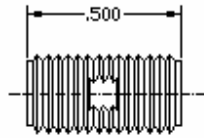
Part Number
SMA1431



Bulkhead Feedthrough

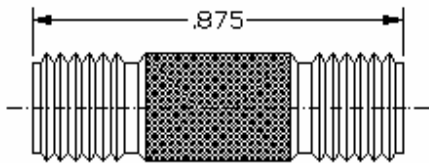
Part Number
SMA1438

6. In-Series Adapters



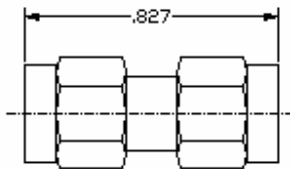
Female to Female

Part Number
SMA1801



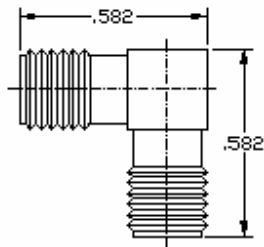
Female to Female

Part Number
SMA1802



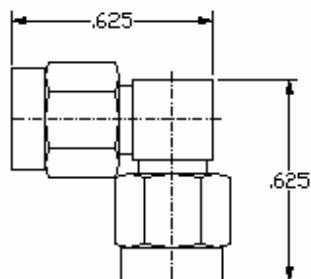
Female to Female

Part Number
SMA1803



Female to Female

Part Number
SMA1804



Female to Female

Part Number
SMA1805